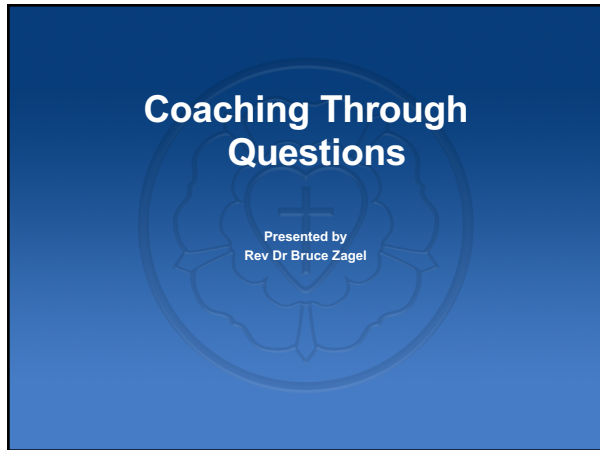


Questions for Coaching  
Rev. Dr. Bruce Zagel  
12 August 2020

1. The role of coaching
  - a. The role of coaching in light of Matthew 18:16-17
  - b. The role of the coach vs. the role of a counselor
  - c. The importance of questions rather than statements
2. The starting question – “How can I best serve you?”
  - a. Matthew 20:28
  - b. Philippians 2:3-8
  - c. Ephesians 5:1-2
3. The importance of trust and engagement
  - a. Earn trust
  - b. Engage, do not debate
  - c. Acknowledge ignorance (ἀγνώσις)
4. Engagement with Scripture
  - a. Ask! Do not assume parties are open to looking at Scripture
  - b. Bring people face-to-face with God, not with the coach
  - c. Where does a party place his/her trust?
  - d. Do not fear “NO!”
5. Application of Scripture
  - a. Do you think this passage applies?
    - i. If so, how?
    - ii. If not, why not?
6. Give hope
  - a. Hope comes from the gospel, not from our obedience
  - b. Obedience is an outgrowth of faith
  - c. Coaching people in conflict should always lead to hope in the forgiveness of sins that is from Christ alone



1

---

---

---

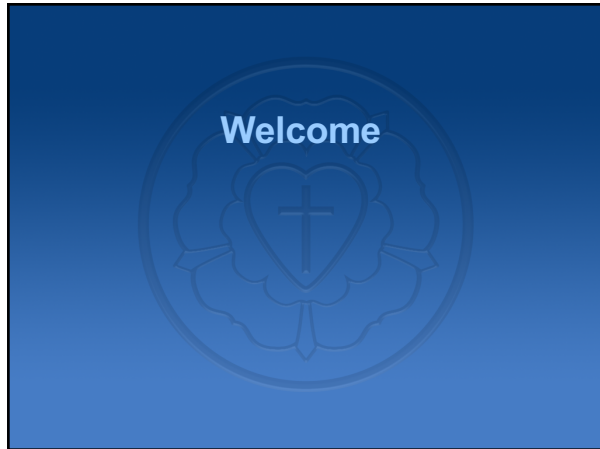
---

---

---

---

---



2

---

---

---

---

---

---

---

---



3

---

---

---

---

---

---

---

---

**The Role of Coaching**




4

---

---

---

---

---


---

---

---

**The Role of Coaching**

- Coaching and Matthew 18
- Coaching vs. Counseling
- Statements vs. Questions



5

---

---

---

---

---

---


---

---

**Start to Coach**

Which of the following questions do you think is best for starting a coaching session?

1. What can I do for you today?
2. How can I help you today?
3. How can I best serve you today?
4. What do you need from me today?



6

---

---

---


---

---

---

---

---



### Questions for Coaching

- “How may I best serve you?”
  - Why say “serve” instead of “help”?
    - Over, alongside, or beneath?
  - Matthew 20:28
  - Philippians 2:3-8
  - Ephesians 5:1-2

7

---

---

---


---

---

---

---

---



### What Comes Next?

After opening with prayer, what direction should the coach go next?

1. Directly to the Bible
2. Earn trust and engage
3. Provide answers to what the coach already knows
4. Whatever it takes to get to the heart of the problem

8

---

---

---


---

---

---

---

---



### Questions for Coaching

- “Can you help me understand . . .?”
  - Earn trust
  - Engage, don’t debate
  - Acknowledge ignorance (αγνωσις)
  - Encourage self-reflection, self-examination

9

---

---

---

---

---

---

---


---



**What Comes Next?**

What is the source of direction, diagnosis, correction, and hope for the coach and the party?

1. Bible
2. Experience of the coach
3. Theology of the party's home church
4. Cultural mores



10

---

---

---

---

---


---

---

---

**Questions for Coaching**

- “Are you interested to see if the Bible has anything to say about this?”
  - Bring people face-to-face with God, not with yourself
  - Find out where party places trust
  - Don't be afraid of “no”



11

---

---

---

---

---

---


---

---

**What Comes Next?**

How does the coach and the party evaluate the Scriptures being used?

1. Scripture interprets Scripture
2. Coach and party interpret Scripture
3. Call an expert



12

---

---

---


---

---

---

---

---



### Questions for Coaching

- “Do you think this passage applies? If so, how? If not, why not?”
  - Not: What does this passage mean to you? (a.k.a. personal interpretation)

13

---

---

---


---

---

---

---

---



### What Comes Next?

Where do you want to end up in the coaching session?

1. Direction from God’s law
2. The promise and hope of the gospel
3. Step-by-step directions for the party
4. Some of each, but the focus is on the gospel

14

---

---

---


---

---

---

---

---



### Questions for Coaching

- Always remember—hope comes from the gospel, not from our obedience
- Our obedience is an outgrowth of the faith that God gives
- Coaching people in conflict should always lead to hope in the gospel

15

---

---

---

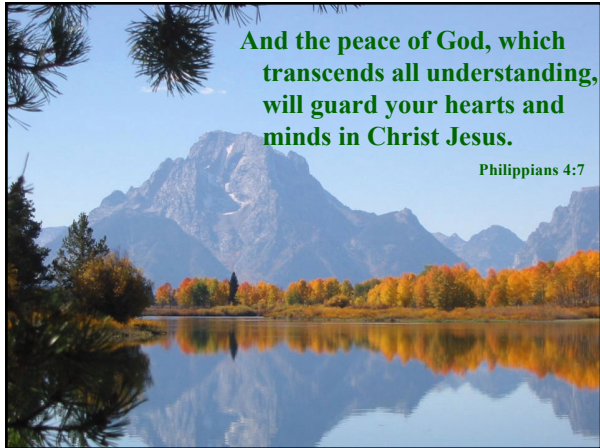
---

---

---

---

---



16

---

---

---

---

---

---

---